

# Howden MK4E/WCV255/14536/054

## Specifications

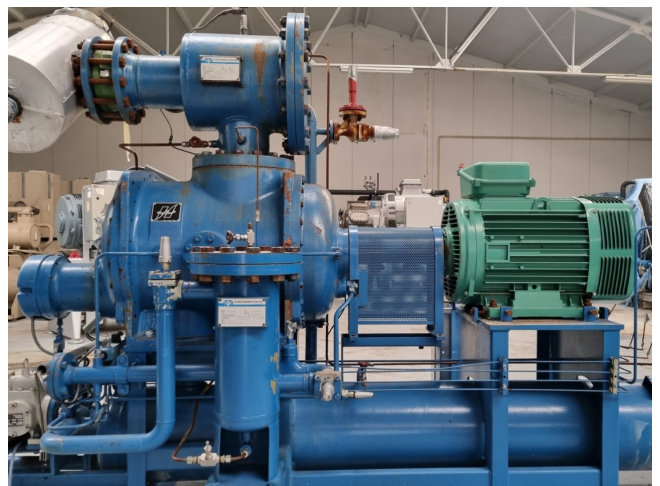
Brand	Howden
Type	MK4E/WCV255/14536/054
	4
Refrigerant	Freon
kW at -10°C/+40°C	1380
Electromotor Specs	132
On steel base frame	✓
Pressure safety switches	✓
Hp/Lp/Op	
Pressure gauges	✓
Hp/Lp/Op	
Oil separator	✓
Control panel	✓
m3 / h	2150
Remarks	# 1380 based on -10°C/35°C
Remarks	R404a - R22 or other freon types
Package / Rack	✓
Sizes	4010x1700x2350 mm (LxWxH)
Stock	1



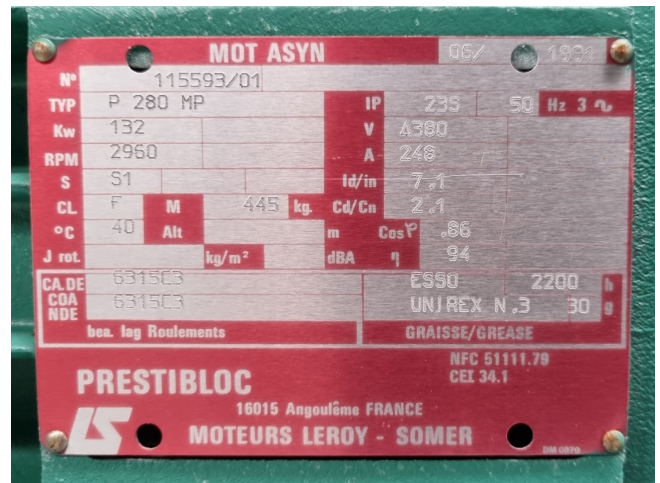
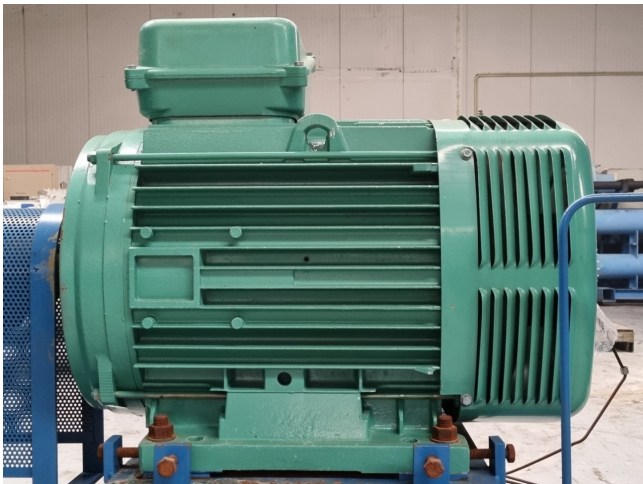
## Description

### Used Howden MK4E/WCV255/14536/054

Used Howden MK4E/WCV255/14536/054 screwcompressor. Including the following components; Electromotor Leroy Somer 132 kW at 2960 RPM (MK4E/WCV255/14536/054) Oil Separator and Control Panel.  
\* Why choose for HOSBV? Were not only the largest used refrigeration specialist in Europe, but also, we deliver all equipment including an extensive test, warranty and industrial cleaning. \*Optional we can also perform a new paint job and arrange the logistics.







## SECTION 2 – DESCRIPTION



### 2.1 THE WRV/WRVI COMPRESSOR

The Howden WRV/WRVI Oil Injected Compressor is a positive displacement, capacity controlled, oil flooded, rotary machine.

A feature of the WRVI compressor range is the facility to adjust the volume ratio by altering the size of the discharge port to obtain the desired ratio in the range 2.2:1 to 5.0:1.

The WRVI compressors are supplied with two oil injection ports on the side of the main casing. If no oil injection is required due to the duty then it is not necessary to pipe up to these connections and the plugs can remain fitted to the casing. Older compressor models, which had no oil injection, were identified as WCV units on the name plates.

**Note:** The plugged WRVI is the direct replacement for a WCV unit.

The accurately machined helical rotors are called Male and Female. The Male (driving) rotor has four lobes that mesh with six flutes in the Female (driven) rotor, both rotors having the same outside diameter. Each rotor is supported by two plain white metal thick walled journal bearings fitted adjacent to the compression chamber.

As the lubricating oil is at discharge pressure plus 2.1 bar (30 psi) for standard range compressors and at 3.1 bar (45 psi) for the 'H' designated compressors, the bearings act as shaft seals within the compressor.

regions depending on pressure level and temperature

noise and suitable for high pressure application.

Optional casing and rotor material of construction: Flexibility to match project specification (eg. API 619).

Shaft seal options: Variety of standard and zero emission arrangements.

Range of capability: Probably the most comprehensive range of capacities available in the marketplace.

Variable V: Available with variable V.

Installed compressors: More than 25,000 WRV compressors installed worldwide.

#### WRV 255 range key performance parameters

Max pressure	24.1 bar g	350 psi g
Min flow	794 sm <sup>3</sup> /hr	467 CFM
Max flow	3837 sm <sup>3</sup> /hr	2258 CFM
Min speed	1500 rpm	
Max speed	3600 rpm	
Max power	1150 kW	1542 hp

#### WRV 255 illustrative performance

WRV 255 variants	Speed rpm	Swept volume m³/hr	Nominal capacities in kW for R717		Dimensions in mm basic unit L x W x H	Weight (basic direct drive unit) kg / lbs	Sound pressure level dBA	
			high stage -10/-15/35 °C	low stage -46/-10/5 °C				
WRV255/110	3000	1560	1015	323	303	1493x692x711	1200 / 2645	87
WRV255/130	3000	1750	1152	360	357	1544x692x711	1270 / 2799	87
WRV255/145	3000	2150	1380	439	414	1583x692x711	1352 / 2921	87
WRV255/165	3000	2395	1523	485	460	1633x692x711	1422 / 3134	87
WRV255/190	3000	2930	1714	545	536	1705x692x711	1450 / 3395	87
WRV255/220	3000	3190	2031	647	618	1818x692x711	1650 / 3638	87

For more information on Howden screw compressors, contact:

Howden Compressors Ltd, 133 Barlitan Drive, Glasgow G52 1BE, Scotland, United Kingdom  
Tel: +44 (0) 141 885 7500 Fax: +44 (0) 141 882 8545 Email: hcl.sales@howden.com

Revolving Around You™

